



SINGAPORE 2010 YOUTH OLYMPIC GAMES

SAILING COMPETITION

SAILING INSTRUCTIONS

Organizing Authority

**The International Sailing Federation (ISAF) and the Singapore Youth
Olympic Games Organizing Committee (SYOGOC)**

14 - 26 August 2010

National Sailing Centre, SINGAPORE

1 RULES

- 1.1 The Singapore 2010 Youth Olympic Games Sailing Competition will be governed by the rules as defined in The Racing Rules of Sailing (RRS).
- 1.2 The Olympic Charter of the International Olympic Committee (IOC) will apply.
- 1.3 No national authority prescriptions will apply.
- 1.4 Appendix P of the RRS is changed in Sailing Instruction 15.

2 IDENTIFICATION AND ADVERTISING WHILE RACING

- 2.1 Each day while racing, the first, second and third boats in series scores at the beginning of the day shall display a yellow, blue and red sticker respectively. The Organizing Authority will supply the stickers and instructions for their use at the team leader's meeting.
- 2.2 While afloat, athletes shall wear bibs provided by the Organizing Authority displaying their national Olympic committee (NOC) code on the outside of all other clothing and equipment.

3 COMMUNICATIONS WITH COMPETITORS

- 3.1 Notices to competitors will be posted on the official notice board located next to the Race Control Room.
- 3.2 Signals ashore will be displayed at the flag pole located in the Boat Park.
- 3.3 When flag AP is displayed ashore, '1 minute' is replaced with 'not less than 30 minutes'. Flag AP over H displayed ashore means 'Boats shall not launch. Wait for further instructions.' This changes Race Signals.

4 CHANGES TO SAILING INSTRUCTIONS

- 4.1 Any change to the Sailing Instructions will be posted before 0900 on the day it will take effect except that any change to the schedule of races will be posted by 2000 on the day before it will take effect.

5 FORMAT OF RACING

- 5.1 For each event the sailing competition will consist of an opening series and a final race.
- 5.2 Sixteen (16) races are scheduled for each event. Of the sixteen (16) races, fifteen (15) are scheduled as opening races and one (1) as a final race.

6 SCHEDULE OF RACES

- 6.1 The schedule of races is as follows:

Date	Time	Programme
10 – 13 August	0900hrs – 1800hrs	Distribution of Equipment & Training
14 August		Opening Ceremony
15 August	0900hrs – 1800hrs	Training
16 Aug 2010	1500hrs – 1800hrs	Practice Race
17 Aug 2010	1200hrs – 1800hrs	2 Races
18 Aug 2010	1200hrs – 1800hrs	3 Races
19 Aug 2010		Lay Day
20 Aug 2010	1200hrs – 1800hrs	2 Races
21 Aug 2010	1200hrs – 1800hrs	3 Races
22 Aug 2010		Lay Day
23 Aug 2010	1200hrs – 1800hrs	2 Races
24 Aug 2010	1200hrs – 1800hrs	3 Races
25 Aug 2010	1200hrs – 1800hrs	Final Race & Medal Ceremony
26 Aug 2010	0900hrs – 1300hrs	Reserve Final Race
		Closing Ceremony

- 6.2 The scheduled time of the warning signal for the first race each day is 1200hrs.
- 6.3 A maximum of 3 races may be sailed each day.
- 6.4 On the last scheduled racing day for each event in the opening series, no warning signal will be made after 1600. On the scheduled final race day for

each event, no warning signal will be made after 1630.

- 6.5 To alert boats that a race or sequence of races will start soon, the orange flags defining the ends of the starting line will be displayed with one sound signal for at least four minutes before a warning signal is displayed.

7 Event Flags

- 7.1 Events and their flags will be as follows:

Event	Class	Flag
Boy's Windsurfer	Techno 293	"T293" on white background
Girl's Windsurfer	Techno 293	"T293" on yellow background
Boy's One Person Dinghy	Byte CII	"CII" on white background
Girl's One Person Dinghy	Byte CII	"CII" on yellow background

8 RACING AREAS

- 8.1 Attachment 1 shows the approximate location of the racing areas. Racing areas may be moved to other locations within the exclusion zone.

9 THE COURSES

- 9.1 Attachment 2 shows the courses, including the course designation, the approximate angles between legs, the order in which marks are to be passed and the side on which each mark is to be left.
- 9.2 No later than the warning signal, the race committee signal boat will display the course designation and the approximate compass bearing of the first leg.
- 9.3 Courses will not be shortened. This changes RRS 32.

10 MARKS, STARTING LINE and FINISHING LINE

- 10.1 Marks 1, 2, 3, 4, S1, S2, S3 and associated gate marks, and starting and finishing lines marks will be as follows:

	<u>Course Alpha</u>	<u>Course Bravo</u>
Mark 1	Orange Conical	Orange Conical with Black Bands
Mark 2	Yellow Conical	Pink Sphere
Mark 3	2 x Pink Sphere (Gate)	2 x Pink Sphere (Gate)

Mark 4	2 x Pink Sphere (Gate)	2 x Orange Conical with Black Bands (Gate)
New Mark	Yellow Sphere	Yellow Sphere
S1	Yellow Conical	Pink Sphere
S2	Pink Sphere	Pink Sphere
S3	Pink Sphere	Pink Sphere
Starting Line	Committee Boat & Pin End Boat	Committee Boat & Pin End Boat
Finishing Line	Committee Boat & either a Blue Conical mark or a staff displaying a blue flag on a nearby Committee Boat.	Committee Boat & either a Blue Conical mark or a staff displaying a blue flag on a nearby Committee Boat.

11 THE START

- 11.1 Races will be started using RRS 26.
- 11.2 The starting line will be between a staff displaying an orange flag on the race committee vessel at the starboard end and a staff displaying an orange flag on the race committee vessel at the port end.
- 11.3 Boats whose warning signal has not been made shall avoid the starting area during the starting sequence for other races.
- 11.4 A boat starting later than four minutes after her starting signal will be scored DNS. This changes RRS A4 and A5.
- 11.5 If a boat fails to start or breaks rule 30.3, the race committee at Mark 1 or nearby will point flag X at her, make a sound signal and display her national sail letters as described in Appendix G1.1. The so identified boat shall immediately leave the course area. If she fails to do so she will be disqualified without a hearing and her score will not be excluded. This changes RRS A5.

12 CHANGE OF THE NEXT LEG OF THE COURSE

- 12.1 To change the next leg of the course, the race committee will lay a new mark (or move the finishing line) and remove the original mark as soon as practicable. When in a subsequent change a new mark is replaced, it will be replaced by an original mark.

13 THE FINISH

- 13.1 The finishing line will be between a staff displaying a blue flag on the race committee vessel and either:
- a) the course side of a nearby blue conical inflatable finishing mark, or
 - b) a staff displaying a blue flag on a nearby race committee vessel.

14 TIME LIMITS AND TARGET TIMES

- 14.1 The time limits and target times for all races are as follows:

Class	Time Limit	Target Time
Techno 293	50 Minutes	30-35 Minutes
Byte CII	80 Minutes	45-50 Minutes

- 14.2 Failure to meet the target time will not be grounds for redress. This changes RRS 62.1(a).

15 PENALTY SYSTEM

- 15.1 RRS Appendix P, Special Procedures for Rule 42, will apply except for the changes in Sailing Instructions 15.2 and 15.3.
- 15.2 RRS P2.1 is changed to read: When a boat is penalized under P1 her penalty shall be a Two-Turns Penalty under RRS 44.2. If she fails to take it she shall be disqualified without a hearing.
- 15.3 RRS P2.2 and 2.3 will not apply.

16 PROTESTS AND REQUESTS FOR REDRESS

- 16.1 Protest forms are available at the Race Control Room. Protests and requests for redress or reopening shall be delivered there within the appropriate time limit.
- 16.2 For each fleet, the protest time limit is 90 minutes after the last boat has finished the last race of the day.
- 16.3 Notices will be posted within 30 minutes of the protest time limit to inform competitors of hearings in which they are parties or named as witnesses. Hearings will be held in the protest rooms, located at the 2nd level of the administration building, beginning at the time posted. Hearings may be scheduled to begin up to 30 minutes before the end of protest time.



- 16.4 Notices of protests by the race committee or International Jury will be posted to inform boats under RRS 61.1(b).
- 16.5 A list of boats that have been penalized under Appendix P for breaking RRS 42 will be posted.
- 16.6 Breaches of Sailing Instructions 2, 3.3, 18.1, 19.1, 20.2, 24 and 25 will not be grounds for a protest by a boat. This changes RRS 60.1(a).
Penalties for breaches of Notice of Race 3, 4, 9.1, 9.5 and 10 and Sailing Instructions 2, 3.3, 11.3, 18.2, 19.1, 20.2, 23, 24 and 25 or for breaches of class rules are at the discretion of the International Jury.
- 16.7 On the last day of the opening series, or on the last scheduled day of racing, a request for reopening a hearing shall be delivered:
- a) within the protest time limit if the requesting party was informed of the decision on the previous day;
 - b) no later than 30 minutes after the requesting party was informed of the decision on that day.
- This changes RRS 66.
- 16.8 On the last day of the opening series, or on the last scheduled day of racing, a request for redress based on a jury decision shall be delivered no later than 30 minutes after the decision was posted.
This changes RRS 62.2.

17 SCORING

- 17.1 The Low Point System of RRS Appendix A will apply. RRS B8 is deleted.
- 17.2 For each event the sailing competition will consist of an opening series and a final race.
- 17.3 Sixteen (16) races are scheduled for each event. Of the sixteen (16) races, fifteen (15) are scheduled as opening races and one (1) as a final race.
- 17.4 All boats will progress to the final race.
- 17.5 One (1) race is required to be completed to constitute a regatta.
- 17.6 Six (6) races are required to be completed to constitute an opening series.
- 17.7 When fewer than five (5) opening races have been completed, a boat's series score will be the total of her race scores.
- 17.8 When five (5) to ten (10) opening races have been completed, a boat's series score will be the total of her race scores excluding her worst score. The score

from the final race will not be excluded.

- 17.9 When eleven (11) or more opening races have been completed, a boat's series score will be the total of her race scores excluding her two worst scores. The score from the final race will not be excluded.

18 SAFETY REGULATIONS

- 18.1 All competitors are required to hand in their accreditation tags to the Race Control Room prior to launching and to collect them at the first reasonable opportunity upon coming ashore.
- 18.2 Competitors shall wear life jackets or other adequate personal buoyancy while afloat. The Organizing Authority reserves the right to reject any life jacket or personal buoyancy which it considers unsuitable.

19 EQUIPMENT AND MEASUREMENT CHECKS

- 19.1 A boat or equipment may be inspected at any time for compliance with the class rules and sailing instructions. On the water, a boat can be instructed by a race committee measurer to proceed immediately to a designated area for inspection.

20 REPLACEMENT OF ATHLETES OR EQUIPMENT

- 20.1 Substitution of athletes will not be allowed after 1200 on 10 August 2010.
- 20.2 Substitution of damaged or lost equipment will not be allowed unless approved by the race committee. Requests for substitution shall be made to the race committee at the first reasonable opportunity.

21 OFFICIAL BOATS

- 21.1 Official boats will be marked as follows:

Category	Flag
Race Committee	Orange flag with race course area letter
Jury	Flag with 'J'
Measurement	Flag with 'M'
Safety	Flag with 'S'
Media	Flag with 'Media'

Competition Manager	Flag with 'CM'
Twitter	Flag with 'T1, T2', etc
Principal Race Officer	Flag with 'PRO'
Coach	Flag with 'Coach'

22 SUPPORT BOATS

- 22.1 Private or team support boats are not permitted.
- 22.2 Team Leaders, coaches and other support personnel may go afloat only in craft supplied by the Organizing Authority, and clearly marked as such, from the day of the practice race through to the last race. Access to support boats will be limited to one person per nation per course, subject to availability of boats. Only coaches with the proper accreditation may go afloat in craft supplied by the Organizing Authority. Due to the limited number of boats, each will be shared by two or more coaches.
- 22.3 Coaches shall stay outside areas where boats are racing from the time of the preparatory signal for the first fleet start until all boats have finished or the race committee signals a postponement, general recall or abandonment.

23 TRASH DISPOSAL

- 23.1 Boats shall not put trash in the water. Trash may be placed aboard support and race committee boats.

24 BERTHING and BOAT PARK

- 24.1 Boats shall be kept in their assigned spaces in the boat park.

25 RADIO COMMUNICATION

- 25.1 While on the water, athletes and coaches shall not carry equipment capable of making radio transmissions or receiving radio communications, except for equipment provided by the Organizing Authority. This restriction also applies to mobile telephones.

26 PRIZES

- 26.1 The following medals and diplomas for the Singapore 2010 Youth Olympic Games Sailing Competition will be awarded:



First Place

First prize will be a gold medal and a diploma.

Second Place

Second prize will be a silver medal and a diploma.

Third Place

Third prize will be a bronze medal and a diploma.

27 DISCLAIMER OF LIABILITY

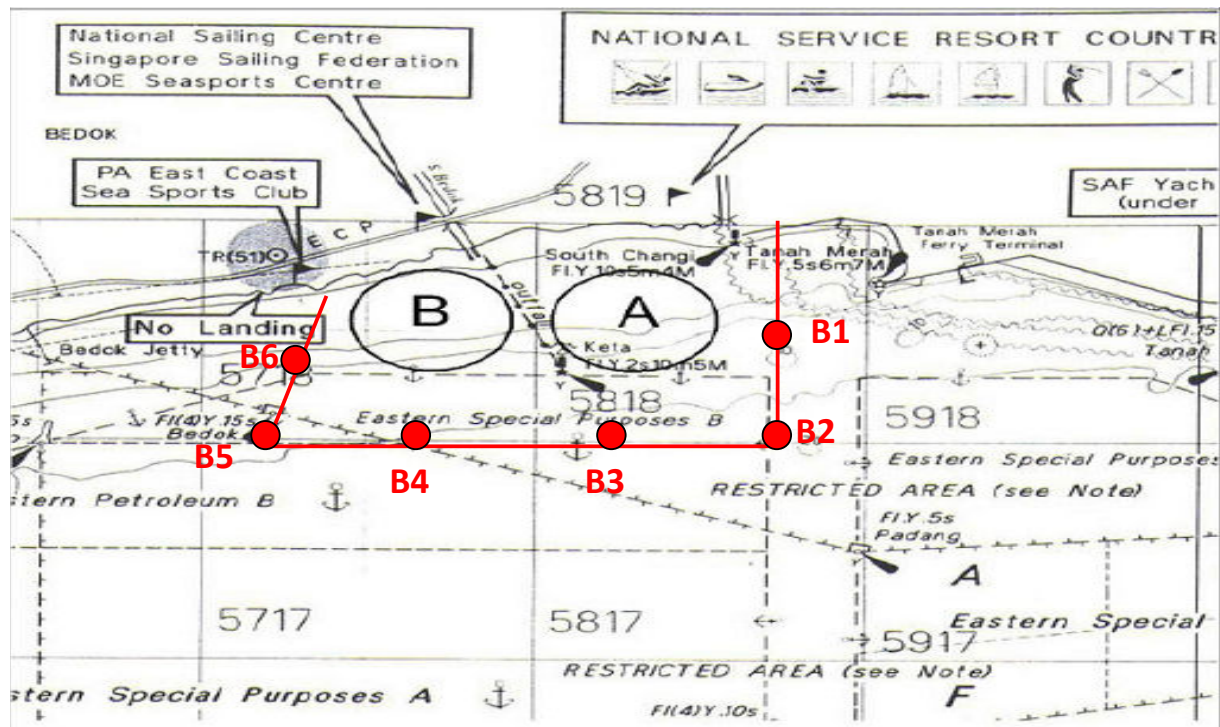
- 27.1 Athletes participate in the sailing competition entirely at their own risk. See RRS 4, Decision to Race. The Organizing Authority will not accept any liability for material damage or personal injury or death sustained in conjunction with or prior to, during, or after the sailing competition.

28 INSURANCE

- 28.1 Each participating boat or participant shall be insured with valid third-party liability insurance with a minimum coverage of €500,000 per event or the equivalent. A photocopy of the insurance certificate shall be submitted to the Organizing Authority at registration.

ATTACHMENT 1

RACING AREA



ATTACHMENT 2

COURSES

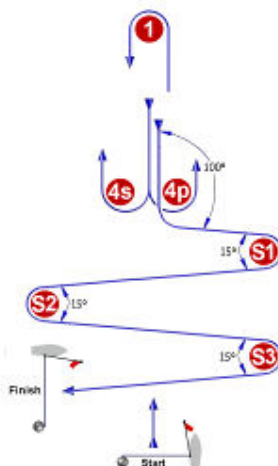
L



Course: Windward/Leeward

Signal	Marking Rounding Order
L2	Start - 1 - 4s/4p - 1 - Finish
L3	Start - 1 - 4s/4p - 1 - 4s/4p - 1 - Finish
L4	Start - 1 - 4s/4p - 1 - 4s/4p - 1 - 4s/4p - 1 - Finish

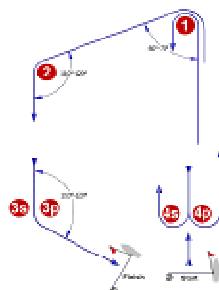
LS



Course: Windward/Leeward With Slalom Finish

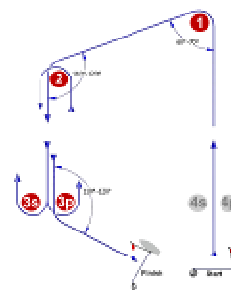
Signal	Marking Rounding Order
LS2	Start - 1 - 4s/4p - 1 - 4p - S1 - S2 - S3 - Finish
LS3	Start - 1 - 4s/4p - 1 - 4s/4p - 1 - 4p - S1 - S2 - S3 - Finish
LS4	Start - 1 - 4s/4p - 1 - 4s/4p - 1 - 4s/4p - 1 - 4p - S1 - S2 - S3 - Finish

I



Courses: Inner Trapezoid

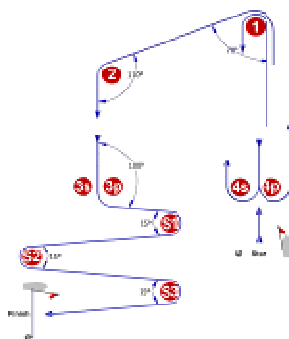
Signal	Marking Bounding Order
12	Start - 1 - 4s/4p - 3 - 2 - 3p - Finish
13	Start - 1 - 4s/4p - 1 - 4s/4p - 1 - 2 - 3p - Finish
14	Start - 1 - 4s/4p - 1 - 4s/4p - 1 - 4s/4p - 1 - 2 - 3p - Finish



Course: Oerter Trapezoid

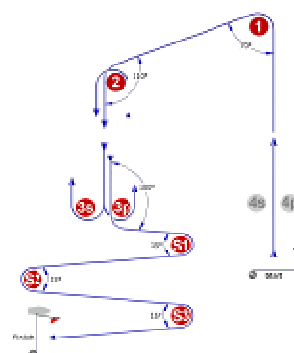
Signal	Marking Rounding Order
02	Start - 1 - 2 - 3s/3p - 2 - 3p - Finish
03	Start - 1 - 2 - 3s/3p - 2 - 3s/3p - 2 - 3p - Finish
04	Start - 1 - 2 - 3s/3p - 2 - 3s/3p - 2 - 3s/3p - 2 - 3p - Finish

IS



Course: Inner Slalom

Source: Inner section	
Signal	Marking Rounding Order
152	Start - 1-4s/4p - 1-2-3p - S1 - S2 - S3 - Finish
153	Start - 1-4s/4p - 1-4s/4p - 1-2 - 3p - S1 - S2 - S3 - Finish
154	Start - 1-4s/4p - 1-4s/4p - 1-4s/4p - 1-2-3p - S1 - S2 - S3 - Finish

OS

Course: Outer Space

Signal	Marking Rounding Order
Q52	Start - 1 - 2 - 3a/3p - 2 - 3p - S1 - S2 - S3 - Finish
Q53	Start - 1 - 2 - 3a/3p - 2 - 3a/3p - 2 - 3p - S1 - S2 - S3 - Finish
Q64	Start - 1 - 2 - 3a/3p - 2 - 3a/3p - 2 - 3a/3p - 3 - 3a - S1 - S2 - S3 - Finish